

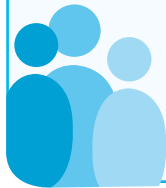
## BACKGROUND TO THE REVISION PROCESS

During the Revision of Specifications process, we consulted our stakeholders through:

- Questionnaires
- Focus Group meetings
- Subject Advisory Team meetings.

We have drawn up this revised specification with the help of:

- Teachers and Heads of Departments in post-primary schools;
- Lecturers in Institutes of Further and Higher Education;
- Representatives from Employer Committees;
- Members of Subject Associations;
- Subject experts from Education and Library Boards; and
- Specialists from our Curriculum Development Teams.



Go to [www.ccea.org.uk/specifications](http://www.ccea.org.uk/specifications) to download the full **GCE Geography AS & A2 Specification**

geography

## GETTING STARTED

Whether you already teach our existing GCE Geography specification, teach a similar specification with another awarding body, or are considering offering this for the first time, getting started with our revised specification really couldn't be easier:



Visit [www.ccea.org.uk/specifications](http://www.ccea.org.uk/specifications) to view the full revised specification for your subject.



Attend the next available support event. Go online for our up-to-date events schedule.

Go to [www.ccea.org.uk/specifications](http://www.ccea.org.uk/specifications) to download the full **GCE Geography AS & A2 Specification**

geography

## CONTACT US NOW

### Subject Officer

Margaret McMullan

Tel: (028) 9026 1200 ext 2285

Email: [mmcmullan@ccea.org.uk](mailto:mmcmullan@ccea.org.uk)

### For queries in relation to:

Specification content

Subject-specific issues

Interpretation of exemplar

papers & other materials

### Specification Support Officer

Arlene Ashfield

Tel: (028) 9026 1200 ext 2291

Email: [aashfield@ccea.org.uk](mailto:aashfield@ccea.org.uk)

### For queries in relation to:

Requesting a meeting

Requesting further support

General subject-specific

queries

### Entries, Results and Certification Team

Nicola Laight

Tel: (028) 9026 1262 or ext 2392

Email: [nlaight@ccea.org.uk](mailto:nlaight@ccea.org.uk)

### For queries in relation to:

Entries

Results

### Distribution Team

Bernard Trainor

Tel: (028) 9026 1200 ext 2168

Email: [btrainor@ccea.org.uk](mailto:btrainor@ccea.org.uk)

### For queries in relation to:

Requesting materials



**WHATEVER YOUR QUERY, WE GUARANTEE YOU A PROMPT, FRIENDLY AND EFFICIENT SERVICE WHEN YOU CONTACT US**

Check out our online leaflet *Customer Charter – Putting You First* at [www.ccea.org.uk](http://www.ccea.org.uk) to view our service targets and our commitment to you.

"I'm really pleased to introduce this revised specification. We have designed it to meet the needs of learners in Northern Ireland whilst also providing a qualification that has international currency. We're proud to be your local awarding body. It is my priority to ensure that our dedicated subject team listens, responds and provides you with a first-class service."

Anne Marie Duffy – Examinations Manager, CCEA

"I'm delighted to provide robust operational systems that support all aspects of examination administration. Whether you are making entries, have a query about examinations or require assistance in relation to results, I can assure you that our specialised systems and customer-focused teams will provide you with the top-class level of service you expect."

Martin Quinn – Business Manager, Examination and Assessment Administration, CCEA

## WHAT TEACHERS SAY ABOUT OUR EXAMINATIONS SERVICE....

98.9% of teachers are satisfied with the support and helpfulness of our staff.

95.5% of teachers are satisfied with the reliability and appropriateness of the materials we dispatch.

98.9% of teachers are satisfied with our administration of examinations.

\* Source: CCEA's 2006 Post-Primary Customer Satisfaction Research



## REVISED GCE AS & A2 SPECIFICATION SNAPSHOT FOR GEOGRAPHY

For first teaching from September 2008

For first award of AS Level in Summer 2009

For first award of A Level in Summer 2010

geography

## SUMMARY

- AS 1: **Physical Geography (including fieldwork skills)** – External exam (to include an assessment of fieldwork), 1hr 30mins, 50% of AS, 25% of A Level, available January and Summer
- AS 2: **Human Geography (including skills and techniques)** – External exam (to include an assessment of skills and techniques), 1hr 30mins, 50% of AS, 25% of A Level, available January and Summer
- A2 1: **Human Geography and Global Issues** External exam, 1hr 30mins, 25% of A Level, available January and Summer
- A2 2: **Physical Geography and Decision-Making** External exam (to include a decision-making exercise), 2hrs 30mins, 25% of A Level, available Summer only

## KEY FEATURES

- Reduces the number of assessment units to 4, with each unit weighted at 25% – 50%
- Offers stretch and challenge to students in the form of open-ended questions on A2 1 and A2 2
- Provides a sound basis for progression to Higher Education
- Exemplar schemes of work, a resource list and specimen papers/mark schemes accompany the specification

## BENEFITS TO LEARNERS

We have designed this specification to help learners develop:

- An understanding of geographical concepts and processes to understand and interpret our changing world;
- An awareness of the complexity of interactions within and between societies, economies, cultures and environments at scales from local to global;
- As global citizens who recognise the challenges and implications of sustainability;
- As critical and reflective learners;
- As users of new technologies; and
- Enjoyment, satisfaction and inspiration from their geographical studies.

CURRENT		NEW		WHAT HAS CHANGED AND WHY?	
MODULE	TITLE	UNIT	TITLE	WHAT HAS CHANGED?	WHY HAS IT CHANGED?
AS 1	Themes in Physical Geography	AS 1	Physical Geography	<p>This unit now comprises two sections:</p> <ul style="list-style-type: none"> <li>Section A concerns skills relating to fieldwork. Centres may choose an issue, hypothesis or question for investigation related to, or arising from, study as part of Unit 1 or 2.</li> <li>Section B gives students the opportunity to study processes and forms associated with fluvial, biological and meteorological activities in different environments over time.</li> </ul> <p>The fieldwork may be completed as a small group or class.</p>	Because subject criteria require that students are given the opportunity to complete out of classroom work including fieldwork
AS 2	Themes in Human Geography	AS 2	Human Geography	We have updated and amended the content of this unit. For example, we have replaced theory based on urban structure models and the concept of central places with challenges for rural and urban environments (e.g. how the countryside is managed for conservation, recreation and tourism).	To make this unit more up-to-date, interesting and relevant to young people in the 21st. century
AS 3 (1 hr external exam)	Techniques in Geography			This unit has been deleted.	To fulfil subject criteria requiring that three AS units be reduced to two
A2 1	Physical Processes and Human Interactions	A2 1	Human Geography and Global Issues	<p>This unit now comprises two sections: Section A and Section B.</p> <p>Section A comprises three optional units from which two of the following must be chosen:</p> <ul style="list-style-type: none"> <li>Impact of Population Change</li> <li>Issues in Ethnic Diversity</li> <li>Planning for Sustainable Settlements.</li> </ul> <p>Section B allows students to investigate global issues and debates relating to our sustainable future. One issue must be chosen from the following:</p> <ul style="list-style-type: none"> <li>Air Pollution (including the Global Warming debate);</li> <li>Nuclear Energy (including the nuclear debate);</li> <li>Agricultural Change and its Impact (including the GM crops debate); or</li> <li>Issues in Tourism (including the ecotourism debate).</li> </ul>	<p>To update and revise the content of subsections</p> <p>To offer a focus on global issues that are relevant to the lives of young people in the 21<sup>st</sup> century</p>
A2 2 (1 hr 30 mins external exam)	Processes and Issues in Human Geography	A2 2	Physical Geography and Decision-Making	<p>This unit comprises two sections: Section A and Section B</p> <p>Section A comprises three optional units from which two of the following must be chosen:</p> <ul style="list-style-type: none"> <li>Fluvial and Coastal Environments</li> <li>Nature and Sustainability of Tropical Ecosystems</li> <li>The Dynamic Earth.</li> </ul> <p>Section B comprises a decision-making exercise, which takes the form of a case study.</p>	<p>To update and revise the content</p> <p>Because consultation with teachers showed that decision-making is seen as an important element of the CCEA specification</p>
A2 3 (2 hr external exam)	Skills and Decision-Making in Geography			This unit has been deleted.	To fulfil subject criteria requiring that three A2 units be reduced to two

## COUNT ON US FOR SUPPORT...

### LOCAL SUPPORT > IN PERSON

- We are your **local awarding body**, so we can provide personalised support and visits to you and your centre upon request. Contact the Specification Support Officer named overleaf if you would like to arrange for us to visit you, your department or your students.
- If you have a query or require advice/guidance, please contact the relevant person listed overleaf.

### LOCAL SUPPORT > AT TEACHER-FOCUSED EVENTS

We provide a comprehensive programme of events to support this specification which includes:

- FREE launch events** to introduce you to the revised specification; and
- FREE seminars** to support its teaching and assessment and to assist you with subject-specific issues.

We will mail invitations to Heads of Department at least three weeks in advance of each event. Alternatively, check out our full list of support events online at [www.ccea.org.uk/spec-changes](http://www.ccea.org.uk/spec-changes)

### SUPPORT > ONLINE

Most of the support we provide will be available on your subject microsite. The site will contain:

- The latest version of the GCE Geography specification;
- Schemes of Work;
- Chief Examiner's Reports with top tips for improving examination performance;
- Exemplar Papers and Mark Schemes; and
- Exemplification of Standards (available after the first examination series).

Visit your subject microsite by logging on to [www.ccea.org.uk](http://www.ccea.org.uk) and selecting it from the dropdown menu.

### SUPPORT > IN PRINT

Some of the materials listed above are also available in print. To find out which materials and publications are currently available for your subject:

- Contact Bernard Trainor in our Distribution Team on (028) 9026 1200 ext 2168; or
- Go to [www.ccea.org.uk](http://www.ccea.org.uk) to view our *Examination and Assessment Sales Catalogue*.

**CONTACT US IF YOU DON'T FIND WHAT YOU ARE LOOKING FOR**

